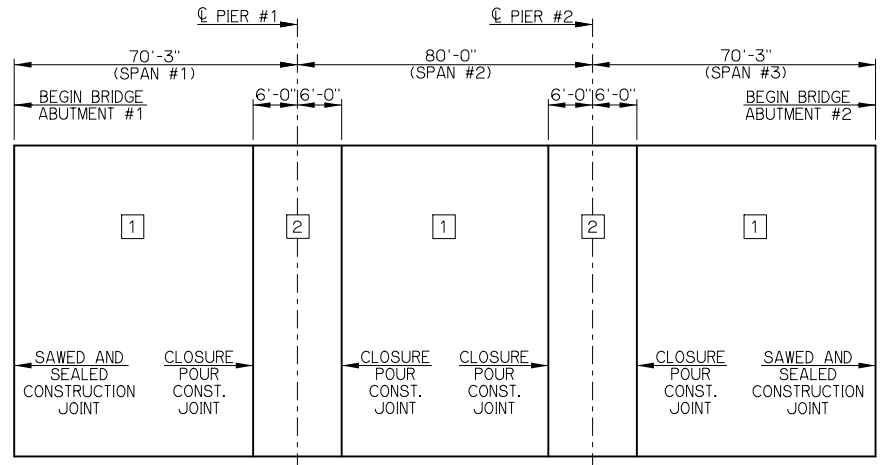


**TOP DECK SLAB REINFORCING STEEL LAYOUT**

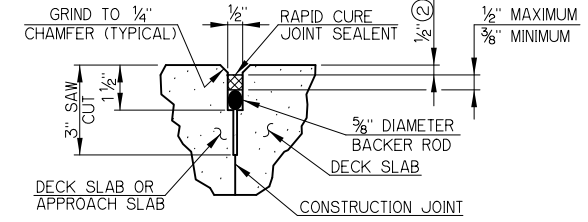
① MINIMUM LAP SPlice LENGTH SHALL BE 1'-8" FOR ET BARS AND 2'-6" FOR EB BARS. ALL E BARS SHALL BE CONTINUOUS THRU CLOSURE POUR CONSTRUCTION JOINTS. DO NOT LAP WITHIN 10 FEET OF CENTERLINE OF PIER #1 AND PIER #2.

DECK SLAB BAR LIST				
MARK	SIZE	NO.	FORM	LENGTH
A1	#4	395	BENT	42'-10"
A2	#6	26	BENT	43'-2"
A3	#5	48	BENT	43'-0"
AC	#6	784	BENT	12'-3"
ET	#4	84	STR.	225'-4"
EPT	#6	84	STR.	16'-0"
B	#5	445	STR.	41'-10"
EB	#5	84	STR.	227'-10"
EPB	#4	84	STR.	16'-0"
AS	#4	84	BENT	5'-0"
SR1	#5	964	BENT	4'-1"

- ① [A] LENGTH INCLUDES 3 - 1'-8" MINIMUM LAP LENGTHS.
- ① [B] LENGTH INCLUDES 3 - 2'-6" MINIMUM LAP LENGTHS.
- [C] SEE STANDARDS TR4-2-OQE AND B40-TR4-0-PC45 FOR DETAILS NOT SHOWN.

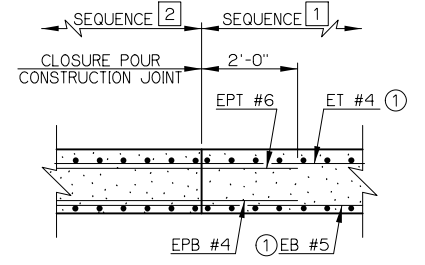


DECK SLAB POURING SEQUENCE DIAGRAM



**SAWED AND SEALED CONSTRUCTION JOINT DETAIL**  
 ② THIS DIMENSION SHALL TAPER FROM 1/2" AT EDGE OF DRIVING LANE OR SHOULDER TO 1/8" AT CONCRETE RAIL POST FOR TRANSVERSE JOINTS ONLY.

**DECK SLAB POURING SEQUENCE NOTE**  
 THE DECK SLAB IS DIVIDED INTO SECTIONS BETWEEN CONSTRUCTION JOINTS AS SHOWN. PLACE THE DECK SLAB CONCRETE OF EACH SECTION IN THE NUMERICAL SEQUENCE INDICATED. SECTIONS OF THE DECK SLAB WITH THE SAME NUMBER MAY BE PLACED IN ANY ORDER. SECTIONS IN SEQUENCE 2 MAY BE PLACED BEFORE ALL OF SEQUENCE 1 ARE COMPLETED IF SEQUENCE 1 AT THE COMMON CONSTRUCTION JOINT IS COMPLETE. SEAL CLOSURE POUR CONSTRUCTION JOINTS WITH HIGH MOLECULAR WEIGHT METHACRYLATE.



CLOSURE POUR CONSTRUCTION JOINT DETAIL

SH-99 OVER BIRCH CREEK		OSAGE COUNTY		Design	RTN	7/12
DECK SLAB REINFORCING STEEL LAYOUT - BRIDGE "C" (SHEET 2 OF 2)				Detail	RTN	7/12
				Check	SBH	7/12
NO. 5730 1228X		NBI 30315		Squad	....	
STATE OF OKLAHOMA		DEPARTMENT OF TRANSPORTATION		Engr.	....	
JOB PIECE NO. 24261(04)		SHEET NO. 120				

Plotted By: rdm Date: 6/7/2017 4:52:48 PM FILE: I:\2010\10K11 Birch S&P Rock Creek\001 - Birch Creek\Final PSE Submittal 6-7-17\120-Deck Slab Reinforcing Steel Layout Bridge C Sheet 2 of 2.dgn